

## Membership Categories

### Full Association Member (Single membership)

Full Membership is open to anyone paying the full membership fee. This entitles the Member to all the benefits and privileges of the British Beekeepers Association including their insurance scheme.

Associate Member (Single membership) is open to those paying the Associate membership fee. This entitles the member to all the Branch newsletters, Apiary visits and Social events. It does not entitle them to membership of the British Beekeeping Association, nor insurance cover

Family Membership is open to families ( Two adults and all children in the family under the age of 18). It entitles the Family to BBKA membership for one adult with all the insurance cover, and the whole family to the activities and publications of the Branch.

### Membership fees for 2011

**Full Member:** £25.00

**Associate Member:** £5.00

**Family Membership:** £30.00

### Beebase

Your details will be passed to the Seasonal bee inspector and to Beebase, the register of beekeepers. You may then access the website for guidance and up to date information at [www.beebase.csl.gov.uk](http://www.beebase.csl.gov.uk). Your details are secure and inaccessible to any other persons. If you have any questions about this contact the membership secretary.

## Why should I join an Association of Beekeepers?

The first reason is to become part of a group of likeminded people, to exchange ideas and gain experience to make your beekeeping more enjoyable and profitable.

Once you own bees you have a duty of care to members of the public who may be harmed by your bees. Third party insurance cover is essential and this is provided, from the time that a receipt is written for your full membership, by the BBKA. For Associate members (those without bees) membership ensures continued contact with the beekeeping activities in your area.

Family membership entitles the whole family to the Branch activities and to insurance cover against third party claims

### Where does my money go?

From a full membership subscription of £25.00 for the year :

£ 14.00 Goes to the British Beekeeping Association

£3.00 Goes to the Cumbria Beekeeping Association

£2.00 will now go to the BDI for cover for beekeeping equipment.

£6.00 will stay with the Whitehaven and District Branch to fund the year's events.

Hall hire is the most expensive claim on resources at present although courses are usually cost neutral. Printing and postage continues to be an unavoidable expense although the Secretary tries to use e-mail as much as possible, and to send out printed notices together, where practical.

### **BBKA Insurance**

This covers the beekeeper against all third party Public liability and Apiary products liability.

This covers all Full members and Family members.

The cost of this insurance is included in the money which goes to the British Beekeepers Association.

Public liability and Product liability is for a maximum of £5,000,000 per claim.

### **Bee Disease Insurance**

New for the Branch in 2011 following a unanimous vote at the AGM to join BDI.

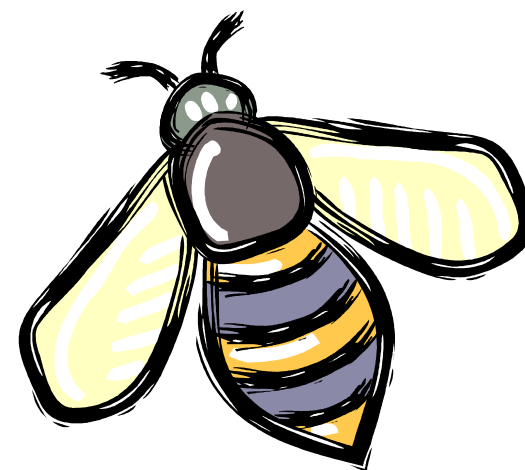
The Bee Disease Control Orders provide for control of both foul brood diseases. If AFB is discovered in your colonies **their destruction is mandatory**. This also applies to EFB if DEFRA considers other measures to be inappropriate (antibiotics)

BDI was established 60 years ago by beekeepers to provide a measure of compensation in the event of colony destruction under the Bee Diseases Control Orders. It supports research into bee health, to counter diseases and to educate beekeepers to ensure that they maintain healthy and productive bees. The cost of cover for your first 3 colonies is included in your membership fee. Additional colonies that you own (including potential increase) are charged on a sliding scale. Please pay this with your membership fee.

If at the time of inspection by an authorised Bee Inspector the number of colonies exceeds those for which a fee has been paid, **no cover** will apply.

<b><u>Number of colonies</u></b>	<b><u>Basic BDI Subscription (included in membership)</u></b>	<b><u>Premium for additional colonies</u></b>
1-3	£2.00	£0.00
4- 5	£2.00	£2.00
6-10	£2.00	£5.25
11-15	£2.00	£7.75
15-20	£2.00	£9.50
21-26	£2.00	£11.10

# **Membership form for Whitehaven and District Beekeepers Branch of CBKA 2011**



- **Why should I join a Beekeeping Group?**
- 
- **Which membership shall I choose?**
- 
- **Where does my money go?**
- 
- **BBKA Insurance explained**
- 
- **BDI explained**